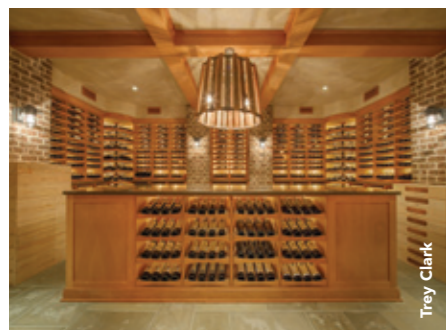


Stellar Cellars

Custom wine cellar designers reveal the techniques they use to store your bottles in style.

Text by Ellie Furuya



Trey Clark



Be You

The most important features of a wine cellar reflect the priorities and tastes of the individual collector. An important strategy in cellar design is making the wine the star of the show. Gone are the days when the only part of the bottle you could see was the cork – think of an art gallery where the cellar is the gallery and the wine is the art. Lighting has also become an essential feature of cellar design. Wine cellars used to be dank, dark spaces, where no one but the collector dared to venture. LED ambient lighting adds warmth and character without harming the wine. Cellars also used to be stuck in out-of-the-way corners, but today's collectors may place them strategically to facilitate the social aspects of wine appreciation. Glass is often incorporated into entry systems to enhance the sharing experience. Ultimately, the cellar is about much more than capacity and aesthetics. It should fit you like a glove.

Be Bold

We strive to transform each space into a visual masterpiece, while adhering to the collector's needs. Will it be for storage, a showpiece or a bit of both? Will it be contemporary, traditional, or something in between? We place importance on highlighting the collector's trophy wines, which creates a more dramatic view of the showcase. Another technique we employ is seamless glass to provide a longer line of sight into the cellar and heighten the sense of being in a wine room. We hide the climate control system by building louvred grill covers into the wine racks and installing small grilles on the ceiling and near the floor. Dimmers are used to set the mood at the flick of a switch. LED lights are ideal as they don't emit heat and can bring in colours. A great design starts with great imagination and wine architects such as Joe and myself can turn any space into the cellar of dreams.

Have Flow

Functional aesthetics are the most important attributes in our wine cellar design, encompassing elements from science and design to create the ideal environment for ageing wine long term. The architect's floor plans help us to develop the mechanical layout. For the environmental systems to be efficient, we need to ensure there is an adequate and balanced airflow going throughout the entire space, which prevents damage caused by mould or mildew. Our focus is the wine and we develop the cellar space storage system in tandem with the environmental equipment so they are completely integrated. We use modern wine storage systems, which facilitate maximum airflow and provide easier accessibility to the collection. High-quality LED lighting highlights the wine labels and provides good visibility without adding heat.



Jim Cash

Founder of Revel Custom Wine Cellars in Michigan, USA



Curtis Dahl

Co-founder of Joseph & Curtis Custom Wine Cellars in New York, USA



Billy Carpenter

Founder of Vin de Garde in Vancouver, Canada

crave
HONG KONG & MACAU

CHECK US OUT ON  **zinio™**

Subscribe to your digital edition of Crave now via www.zinio.com, the largest digital newsstand in the world.

